

Young Investigator Pre-congress Symposia

Stream 3 - Cutting edge advances for Islet and Pancreas Transplantation

Schedule overview

08:30–10:00 **Part 1: Allo- and autoimmunity**

- Islets & tissue Inflammation *Shane Grey*
- Memory T-cell & Innate immunity in T1D *Paolo Monti*
- CAR-Treg therapy *Qizhi Tang*
- Mesenchymal stem cells & Islet transplantation *Hanne Scholz*

10:00-10:20 Coffee & Tea break, Networking

10:20–12:00 **Part 2: Bioengineering and alternative sources for pancreatic β -cell replacement**

- Islet endocrine cell fate *Simona Chera*
- Tissue engineering of endocrine pancreas *Ekaterine Berishvili*
- Cell manufacturing & xenoislet transplantation *Greg Korbitt*
- Mammal organs as a platform for organ bioengineering, regeneration and repair *Giuseppe Orlando*

Lunch: 12:00-13:00

13:00-14:00 **Part 3: Clinical pancreas transplantation**

- Immunosuppression and cancer *Titus Augustine*
- Pancreas Transplantation would be easy if the recipients were not diabetic: *postoperative management*
Jonathan Fridell

14:00-14:15 Coffee & Tea break, Room change

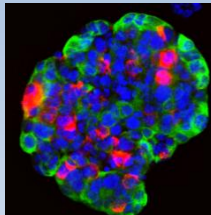
14:15-16:00 **Round table discussions**

Table 1: Is the islet micro-environment important? Implications for differentiation, encapsulation and transplantation
with Ekaterine Berishvili, Giuseppe Orlando and Simona Chera

Table 2: Considerations for a future beta-cell replacement product
with Greg Korbitt and Hanne Scholz

Table 3: Modulating innate and adaptive immunity – new generation immunotherapies
with Qizhi Tang, Shane Grey and Paolo Monti

Table 4: The future of Pancreas transplantation
with Titus Augustine, and Jonathan Fridell



Young Investigator Workshop mentors



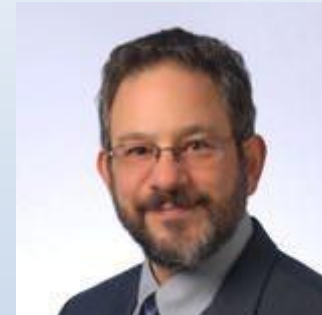
Titus Augustine



Ekaterine Berishvili



Simona Chera



Jonathan Fridell



Shane Grey



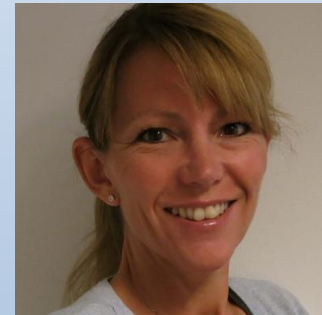
Greg Korbutt



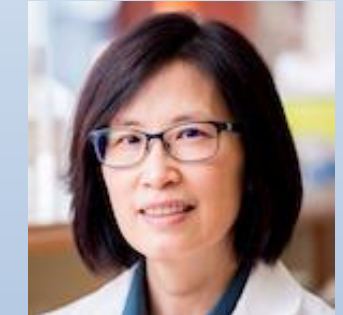
Paolo Monti



Giuseppe Orlando



Hanne Scholz



Qizhi Tang

