

Young Investigator Pre-congress Symposia

Stream 3 - Discussions in cutting edge advances for Islet and Pancreas Transplantation



Schedule overview

09:00–11:00 **Part 1: Immunosuppression, immunity and clinical complications**

- Islets & Tissue Inflammation *Shane Grey*
- Memory T-cell & Innate immunity in T1D *Paolo Monti*
- CAR-Treg therapy *Qizhi Tang*
- Mesenchymal stem cells & Islet transplantation *Hanne Scholz*
- Immunosuppression and Cancer *Titus Augustine*

11:00-11:30 Coffee & Tea break, Networking

11:30-13:00 **Part 2: Bioengineering and stem cell technology for Islet and Pancreas Transplantation**

- Islet endocrine Cell Fate *Simona Chera*
- Tissue Engineering of Endocrine Pancreas *Ekaterine Berishvili*
- Cell Manufacturing & Xenoislet Transplantation *Greg Korbutt*
- Mammal Organs as a Platform for Organ Bioengineering, Regeneration and Repair *Giuseppe Orlando*

Lunch: 13:00-14:00

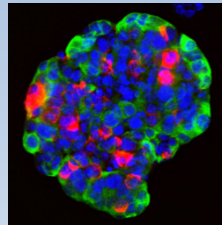
14:00-16:00 **Round table discussions**

Table 1: Is the islet micro-environment important? Implications for transplantation, encapsulation and stem cells
with Shane Grey, Hanne Scholz and Simona Chera

Table 2: Considerations for a clinical islet product
with Greg Korbutt and Ekaterine Berishvili

Table 3: Modulating innate and adaptive immunity – new generation immunotherapies.
with Qizhi Tang and Paolo Monti

Table 4: The future of Pancreas transplantation
with Titus Augustine, Giuseppe Orlando and Jonathan Fridell



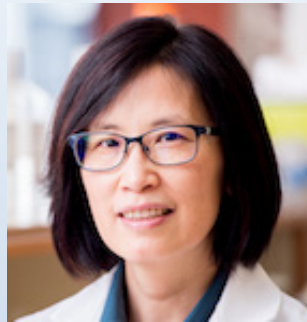
Young Investigator Workshop mentors



Simona Chera



Shane Grey



Qizhi Tang



Titus Augustine



Ekaterine Berishvili



Greg Korbitt



Hanne Scholz



Paolo Monti



Giuseppe Orlando

Organized by the
**IPITA - Young Investigator
Committees**

<http://bit.ly/IPITA-YIC>

<http://bit.ly/IPITA2019-YIC>



ipita | international
pancreas & islet
transplant association

Any Suggestions, Questions ?
Connect w/ us and start the discussion now



@IPITA_YIC



IPITA-YIC



IPITA_YIC